

## SABRE INLINE

---

SABRE INLINE is a combination Bluetooth Low Energy (BLE) reader with access controller management capabilities. By presenting a virtual credential within the SABRE activation range, authorized users can inject user data from their mobile device into existing legacy reader wires. The SABRE INLINE provides mobile access upgrades for existing proximity and smartcard building reader systems.

### Key Features

---

#### Combination Reader Controller

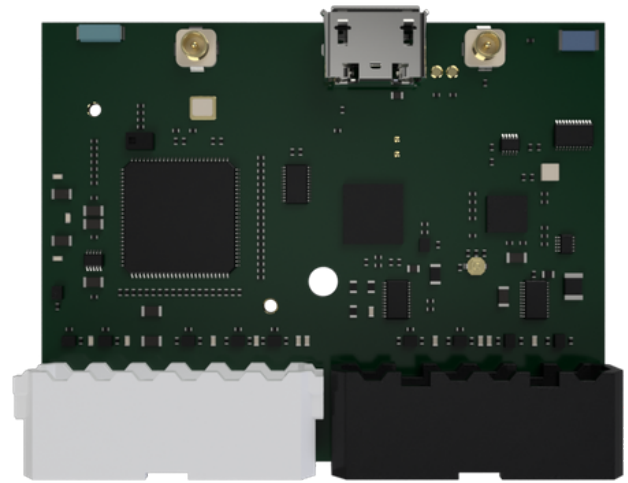
Complete BLE reader and controller functionality, perfect for upgrade to legacy building access systems.

#### OTA (Over-the-air configuration)

Firmware updates and configuration management can be made over-the-air through the Safetrust Wallet application or optional Wi-Fi module.

#### Configurable Extendable Range

Activation range can be configured based on environmental requirements. Where an additional range is required, the module supports the use of external antennas for both the BLE and optional Wi-Fi interfaces.



#### Multiple I/O Interfaces

Includes 5v input/output trigger, internal/external antennas, Wiegand, RS-485, and optional Wi-Fi module.

#### Online/Offline Operation

The Credential Manager provides regular data exchanges to the Safetrust Wallet application and the SABRE INLINE, eliminating the need for constant online connectivity for authentication.

## How does it work?

---

The SABRE INLINE is spliced into existing door reader wiring between the controller and door. Users are assigned virtual credentials for the specific Identity System. When a mobile device with the corresponding credential comes into range of the SABRE, the encrypted credential is sent via BLE. The SABRE INLINE transfers BLE user data to existing Wiegand or RS-485 and which then presents at the controller exactly as a plastic credential.

## Installation

Installation of the SABRE INLINE involves powering the INLINE module with 12VDC and splicing the Wiegand or RS-485 line between the door and controller in an in/out wiring configuration. Whether a user presents a proximity card, smartcard, or virtual credential within a Safetrust mobile wallet, building access is processed through the system controller and the door is released.

Pigtail Color	Name (full)
Black	Ground
White	Data1
Green	Data0
Red/Yellow	5V Output
White/Red	INPUT2 (Wiegand input)
White/Green	INPUT1 (Wiegand output)
Brown	Trigger Output5v
Red	12V Input Power

White 8 pin

Pigtail Color	Name (full)
Red/Black	Ground
Grey	RS485 Line A
Pink	RS485 Line B
White/Yellow	Future Use
White/Black	Future Use
White/Blue	Wiegand Out Red LED
Tan	Wiegand Out Green LED
Red/Green	12V Output

Black 8 pin

## Specifications

- Description: The SABRE INLINE is designed to upgrade legacy building access readers for mobile access using the Safetrust Wallet APP and virtual credentials.
- Mobile Operating Systems: Apple iOS 9.0 or later, Android 4.1 or later
- Hardware: BLE 2.400 GHz - 2.4835 GHz
- Compatibilities: Most popular 125kHz proximity formats from HID®, Indala®, AWID®, GE Casi®, and Honeywell®, MIFARE Classic\* and MIFARE DESFire\* (\*available Q4 2018).
- Output: Wiegand or RS-485 (in / out)
- Power Source: 12 VDC
- Bluetooth Range: 1 to 100 ft (.30 to 30 m)
- Encryption: AES 256, x.509
- Case Dimensions: 5.48" x 2.65" x 1.57" (139.3 x 67.3 x 40.1mm)
- Antenna Length: Optional external antenna for longer range, -5dB (3.15" / 80mm), -15dB (7.78" / 200m)
- Certifications: FCC, CE, RCM, IC
- Warranty: 2 Years (limited warranty, review warranty for complete details)

\*Technical data subject to change without notice. To order, contact [sales@safetrust.com](mailto:sales@safetrust.com) or visit [www.safetrust.com/shop](http://www.safetrust.com/shop).



Find out more at [www.safetrust.com/sabreinline](http://www.safetrust.com/sabreinline)

USA • PH +1 510 497-0512

AUS • PH +61 (0)2 6100-3034